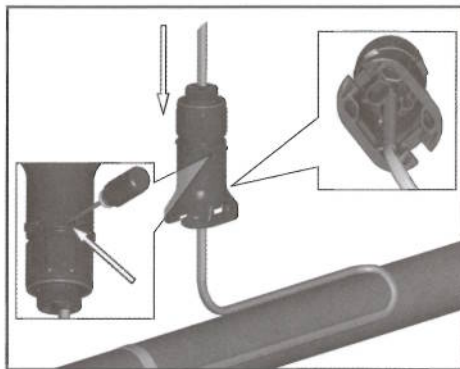
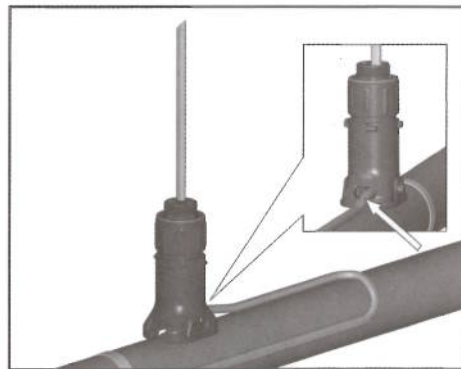


1. Locate bus connection (HPT and FP only) and cable as shown. Cut end of cable at angle to aid in piercing grommet. Leave additional cable for expansion loop. See page 5 for multiple cable installation tips.



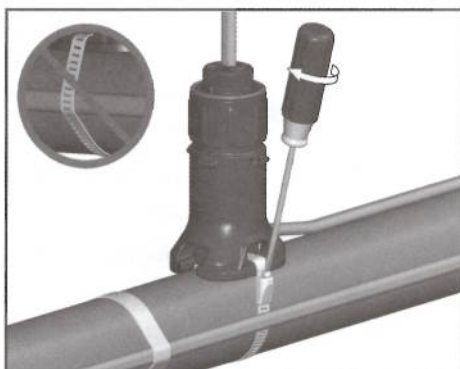
2. Insert cable into expediter. If mounted on bottom or side of pipe, punch out weep hole.



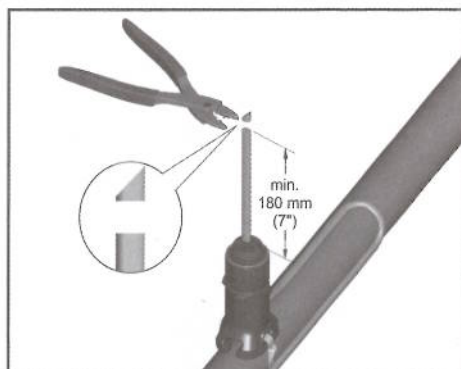
3. Slide expediter toward pipe and route cable through support base entry.



4. Insert banding guide into expediter and snap into place.



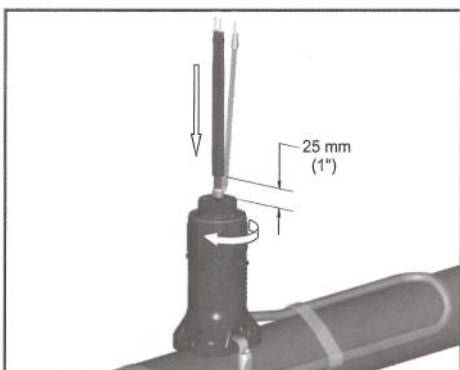
5. Mount expediter to pipe using pipe band. Do not band over cable.



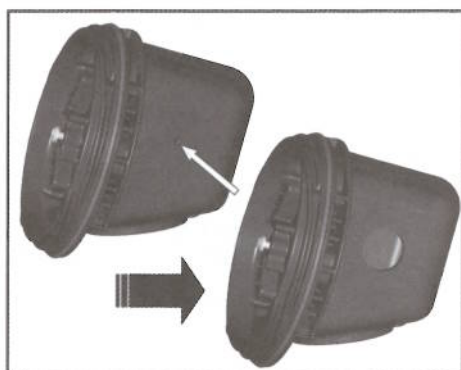
6. Cut off end of cable.



7. Terminate cable with appropriate PETK termination kit. Refer to PETK installation instructions.



8. Push excess cable back through expediter. Tighten cap securely. Tape cable expansion loop to pipe.



9. For power connection applications: Use dimple molded into side of junction box base to locate center of hole, drill for user supplied power connection fittings per manufacturer's recommendations.

